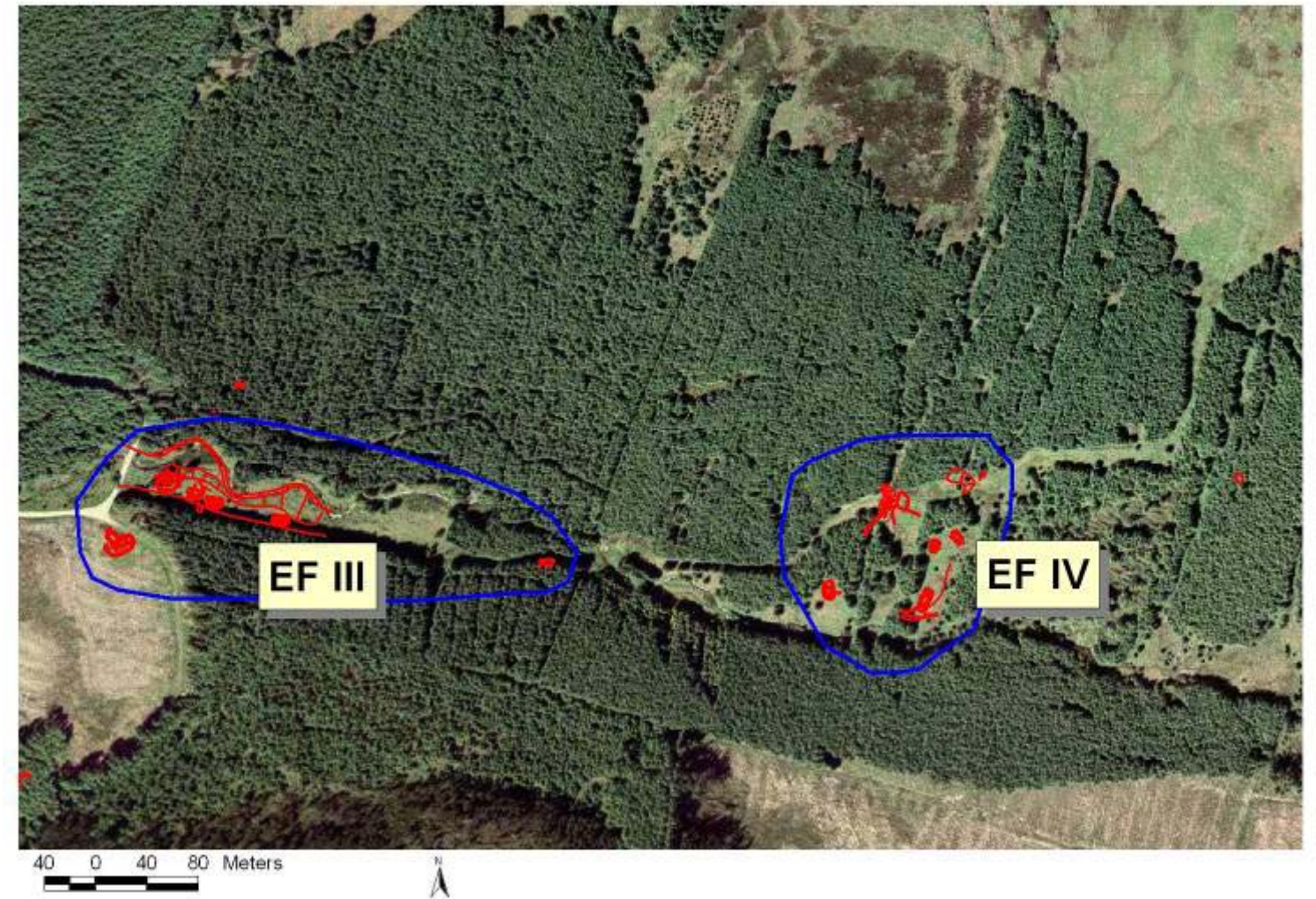


Wild Ennerdale – Management of Principal Archaeological Sites

Site Name:	EF III and EF IV (Smithy Beck Long House Group)				
Scheduled:	Yes	Importance	1	Local Significance:	1
Description:	This landscape comprises two separate, but related, groups of rectangular houses.				
Past History:	Probably grazed up to the mid 1970's after which the forest boundary fence was completed and grazing excluded. EF III has been under bracken for at least 10 years. Bracken control using chemical and beating has been tried in the past				
Current Habitat:	Dominated by bracken (EF III). Given the long period (30 years) surrounded by mature seed producing trees and the lack of regeneration it is unlikely that regeneration will be a problem as long as the ground is left undisturbed.				
Management prescription: (Updated 10/07)	EF III – Continue effective summer strimming, remove spruce at west end and rowan on wall EF IV – Carry out monthly strimming of features 294,295,296 and 297 during 2008 and review results at end of year. Remove spruce and rowan within 2m of walls.				



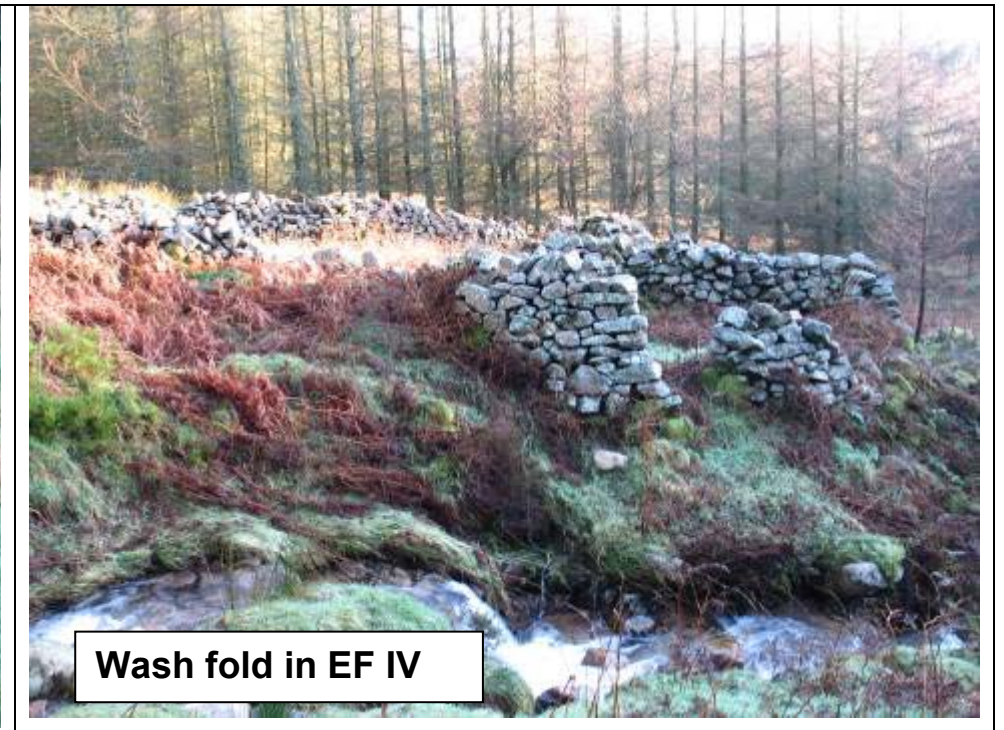
Photos Survey 2006



Western most feature of EFIII



Twin walled feature beside path in EF III



Wash fold in EF IV

Wild Ennerdale – Management of Principal Archaeological Sites

Photos Survey 2006



Record of Work Completed

Date	Details of Work Completed
20/12/2006	Monitoring visit
Summer 2007	EF III features 44,45,47 & 48 strimmed monthly from may to September by FC Staff.
October 2007	Monitoring visit by Gareth Browning (FC) and Jamie Lund (NT) see separate October 2007 Monitoring Report and pictures. Management prescription updated following visit.