

Wild Ennerdale



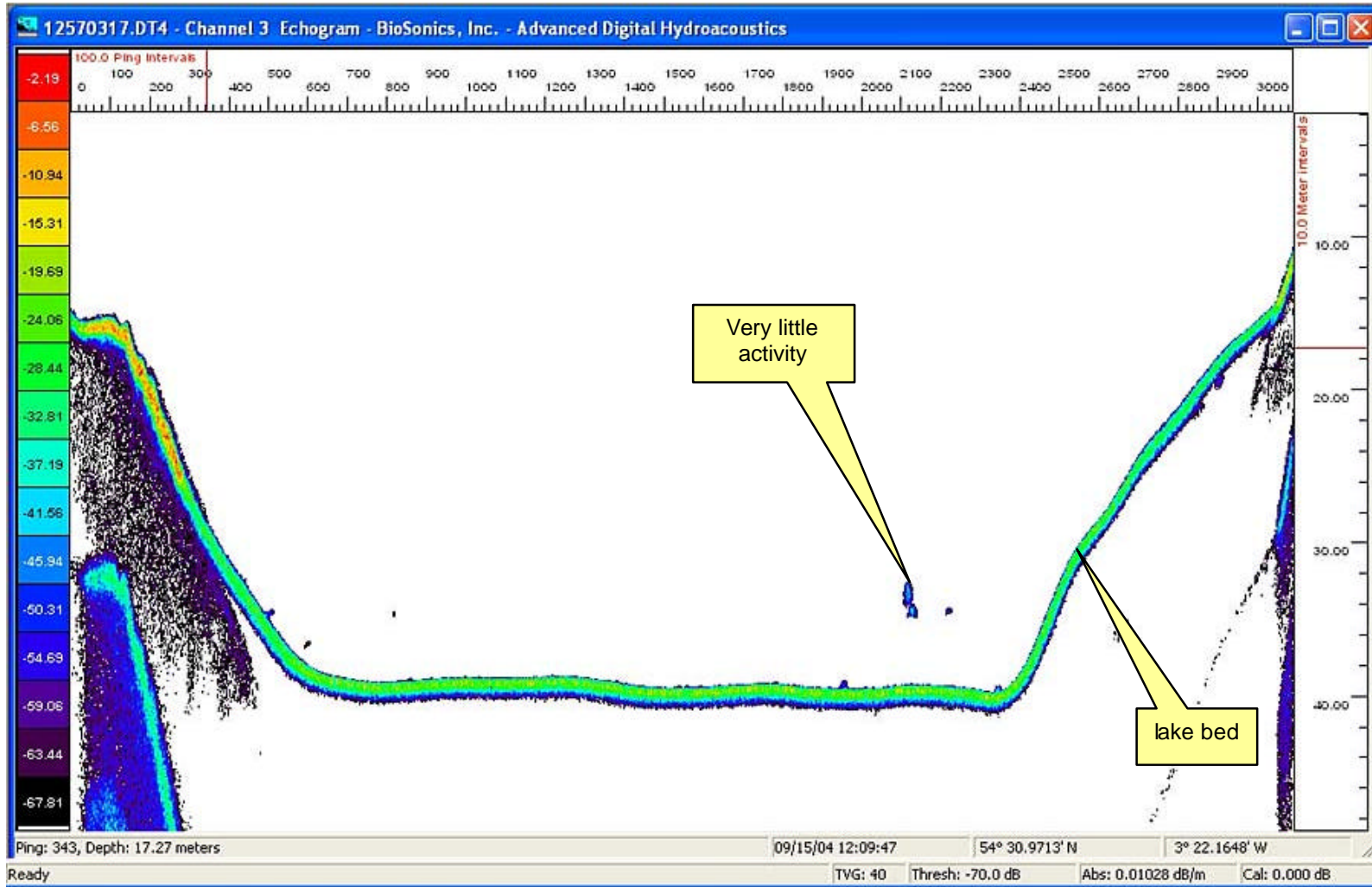
Ennerdale Water Sonar Images

As part of continuing research into the ecology of fish populations in the lake a series of sonar surveys was carried out by the Environment Agency during September 2004. Two images from this survey are shown here which illustrate the difference in the activity of freshwater organisms between daytime and night time.

Further survey and investigation is planned to identify what the sonar recordings are showing in terms of numbers of different species of freshwater organisms.

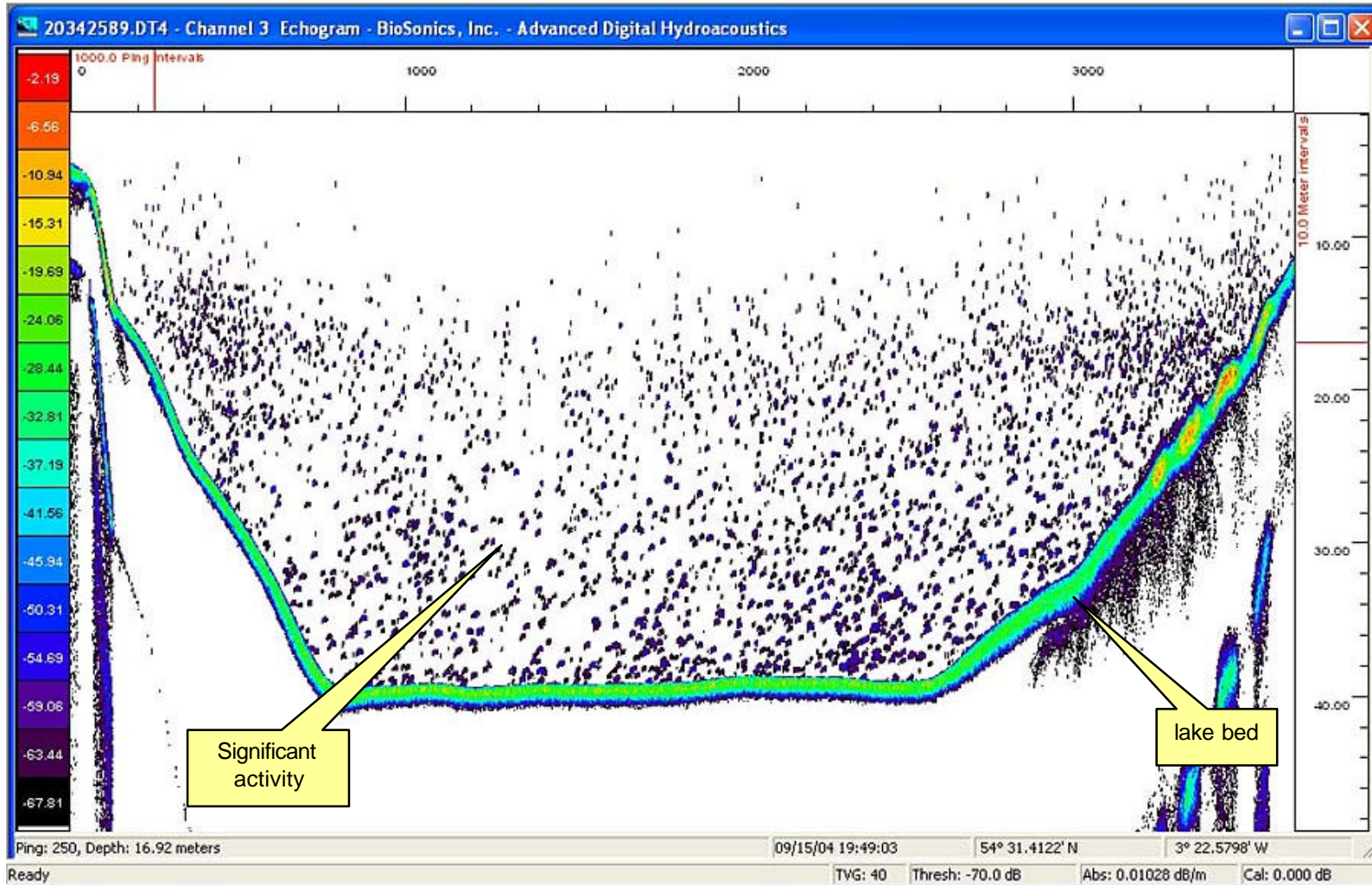
October 2004

Wild Ennerdale



Daytime Sonar Image taken at 12.09pm showing very little activity

Wild Ennerdale



Night time sonar image taken at 7.49pm showing significantly more activity